

# 两相混合式步进电机

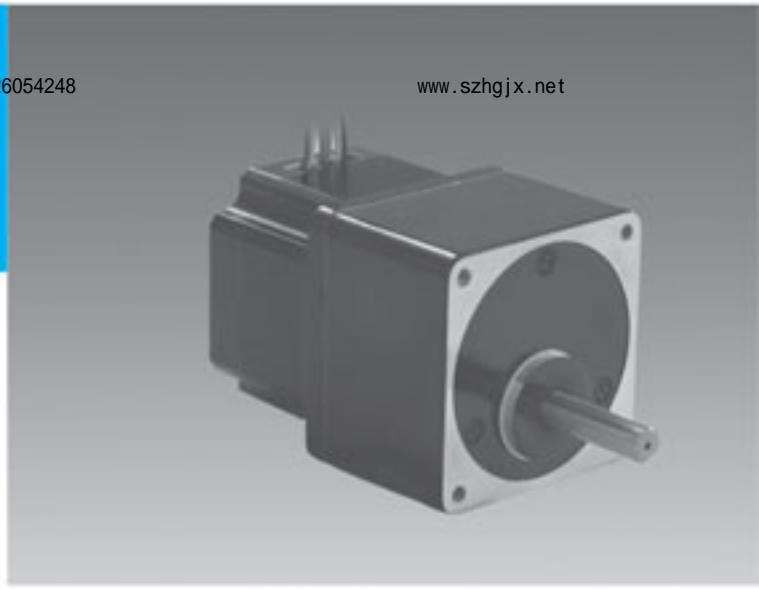
## S90D步进齿轮箱电机



□90mm

单极

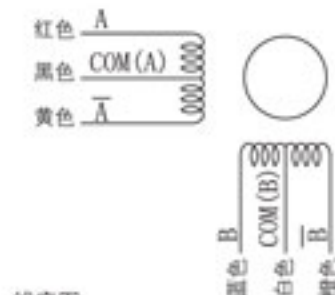
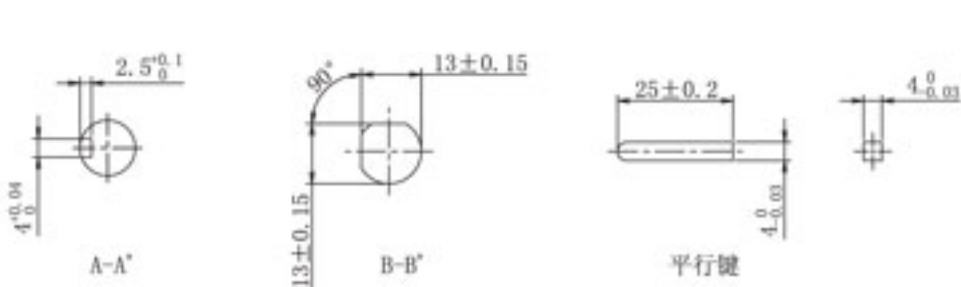
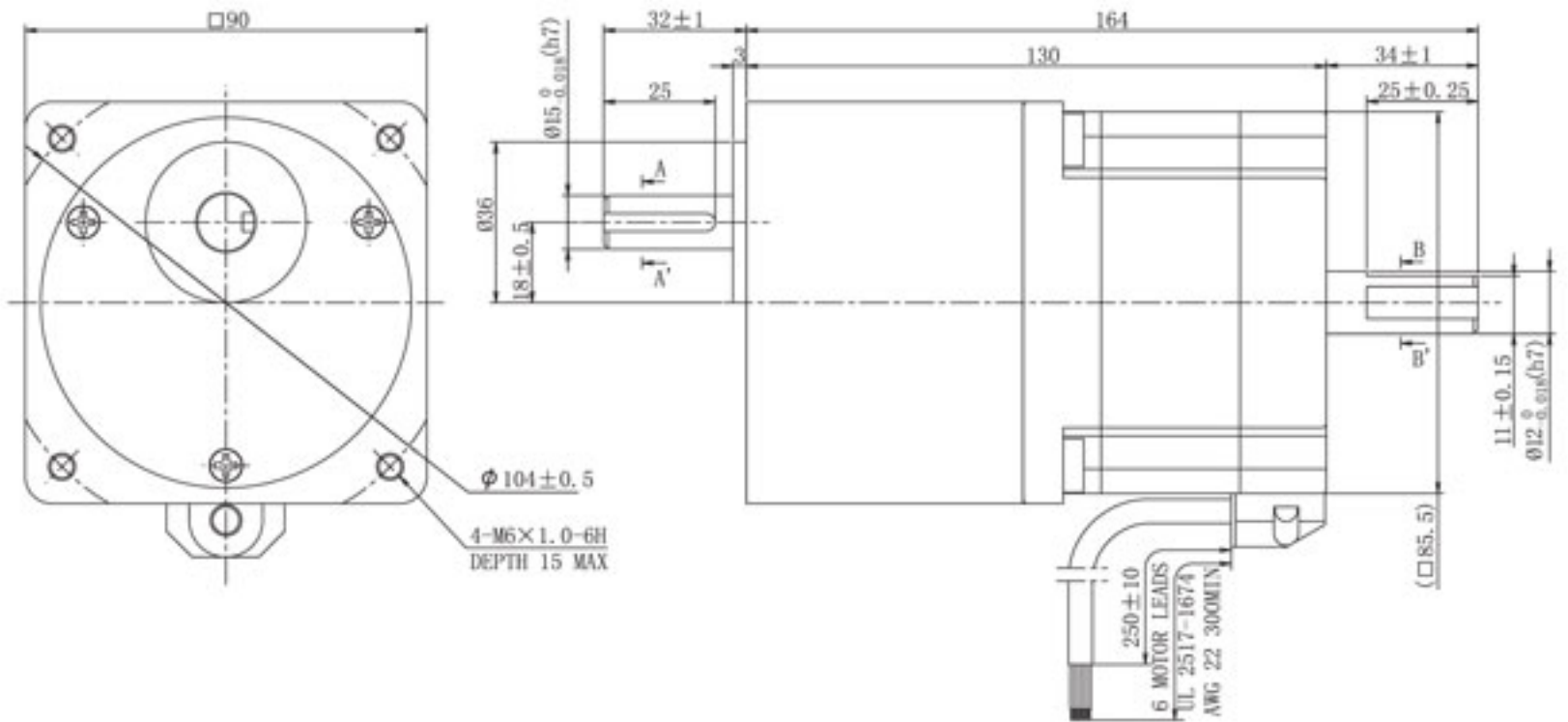
Post Connector



### 参数

型号		保持转矩	转子惯量	额定电流	额定电压	卷线电阻	基本步进角	减速比	容许转矩	容许转速	重量
		HOLDING	ROTOR	RATED	RATED	WINDING	STEPPING	GEAR	MAXIMUM	MAXIMUM	MASS
SINGLE SHAFT	DOUBLE SHAFT	TORQUE	INERTIA	CURRENT	VOLTAGE	RESISTANCE	ANGLE	RATIO	TORQUE	SPEED	
		(N·m)	(kg·m <sup>2</sup> )	(A/相)	(V)	(Ω/相)	度		(N·m)	(r/min)	Kg
S90D130A-MA3R6	S90D130B-MA3R6	2.5	4200 × 10 <sup>-7</sup>	3	1.5	0.49	0.5°	1:3.6	2.5	0 ~ 500	3
S90D130A-MA7R2	S90D130B-MA7R2	5	4200 × 10 <sup>-7</sup>	3	1.5	0.49	0.25°	1:7.2	5	0 ~ 250	3
S90D130A-MA009	S90D130B-MA009	6.3	4200 × 10 <sup>-7</sup>	3	1.5	0.49	0.2°	1:9	6.3	0 ~ 200	3
S90D130A-MA010	S90D130B-MA010	7	4200 × 10 <sup>-7</sup>	3	1.5	0.49	0.18°	1:10	7	0 ~ 180	3
S90D130A-MA018	S90D130B-MA018	9	4200 × 10 <sup>-7</sup>	3	1.5	0.49	0.1°	1:18	9	0 ~ 100	3
S90D130A-MA036	S90D130B-MA036	12	4200 × 10 <sup>-7</sup>	3	1.5	0.49	0.05°	1:36	12	0 ~ 50	3

### 外形尺寸 (例)



线序图